

THE PAGE

AN INTERACTIVE EXHIBITION OF ARTISTS' BOOKS

MAY 20 - JUNE 15, 2010

6518 HOLLYWOOD BLVD.

LA FORUM EVENTS@WOODBURY

HOLLYWOOD EXHIBITIONS



RHEIM ALKADHI
Post Cards from the Clandestine Troupe
3 1/2"h x 5 3/4"w
2009



COLIN COOK
Drawings with Bill
11"h x 9 1/4"w
2009



MARK ROBERT LEWIS
Glassell Park
8 3/4"h x 11"w
2009



SUSAN WEINTZ
Dancing with Zsa Zsa
9 1/4"h x 7 1/8"w
2009



MICHAEL ASHER
Painting and sculpture from the Museum of Modern Art: catalog of deaccessions, 1929 through 1998
11"h x 8 1/2"w
1999



HARRELL FLETCHER
The American War
7 3/4"h x 5 1/8"w
2005



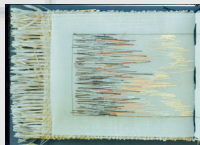
STEVE MILLER
The Dogs of Havana
7 1/2"h x 5"w
2008



MICHELLE WILSON
Current
3 3/4"h x 8"w
2006



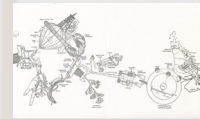
KIM BECK
A Field Guide to Weeds
6 3/4"h x 4 5/8"w
2008



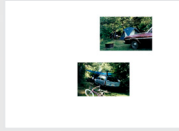
CHRISTINE FORSYTHE
Book of Honest Silence
6 1/2"h x 8 1/2"w
2009



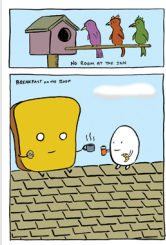
SUSAN PORTEOUS
Aircraft
3-5"h
Widths vary
2008



JENNY YOSHIDA
A Brief Condensed Diagrammatic Abridgement of the Encyclopaedia Britannica in Twenty-Six Pages
6 1/4"h x 5 1/4"w
2009



STEPHEN BERENS
Here, over there and sometimes here
11 3/4"h x 16 3/4"w
2002



DAN GOODSSELL
Imaginary World Comics #2 with Mr. Toast
9 1/2"h x 6 1/2"w
2008



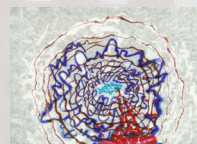
SUE ANN ROBINSON
Notebook, two facsimiles of Chisholm Hours
11 1/2"h x 9 3/4"w
2009



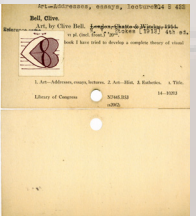
SARAH BRYANT
Point of View
7 1/8"h x 5 1/8"w
2008



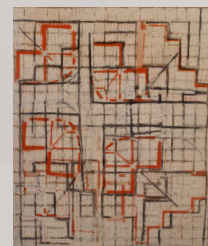
NANCY JO HASELBACHER
Borrowed: Mystery, Romance and Knowledge
6 3/4"h x 4 3/4"w
2009



MOIRA ROTH & SLOBODAN DAN PAICH
Exchanges
8 1/2"h x 11"w
2009-2010



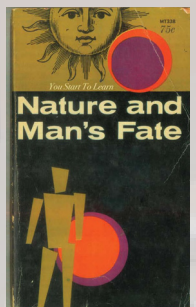
DAVID BUNN
Subliminal Messages
9 3/8"h x 13 1/4"w
2003



DEBORAH HEDE
Sidewalk
5"h x 7"w
2010



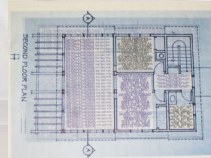
JÉRÔME SAINT-LOUBERT BIÉ
BILLYLLIB
10 3/4"h x 8 3/8"w
1995



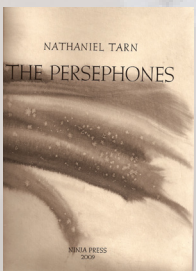
ROBIN CAMERON
The Story Nature and Man's Fate
7 1/2"h x 4 1/2"w
2009



MARGARET HONDA
Dear Ms. Honda
8 1/2"h x 11"w
2009



ROBBIN AMI SILVERBERG
Home Sweet Home
11"h x 17"w
2006



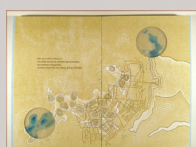
CAROLEE CAMPBELL
The Persephones
14"h x 9 1/4"w
2009



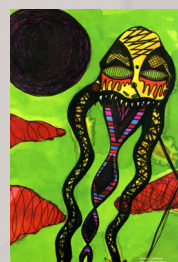
DAVID HORVITZ
The Wikipedia Reader
8 1/2"h x 11 1/4"w
2009



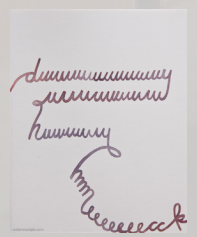
SUMI INK CLUB
Sumi Moderne
10 3/4"h x 7 1/4"w
2009



MACY CHADWICK
The Topography of Home
10 1/2"h x 7"w
2009



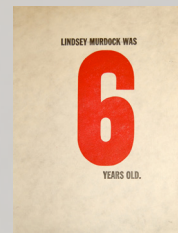
STEVEN HULL
three boys pose for a camera none of them are looking into
8 1/4"h x 5 1/4"w
2007



KATIE LEWIS UNDERWOOD
Inside Out Drawling Book
8 3/8"h x 6 3/4"w
2009



REBECCA CHAMLEE
Azusa: a sequel Poems by Paul Vangelisti
6 1/2"h x 9 3/4"w
2009



AMOS KENNEDY
Book on Handmade Paper
9"h x 6 1/2"w



SUSAN VIGUERS
Spring Tongue-Tied the Ocean
5"h x 7"w
2004

*All measurements listed are the approximate cover dimensions. Images are taken from the books themselves or from the framed pages in the exhibition. Additional images and artists' statements can be found in the exhibition web kiosk.

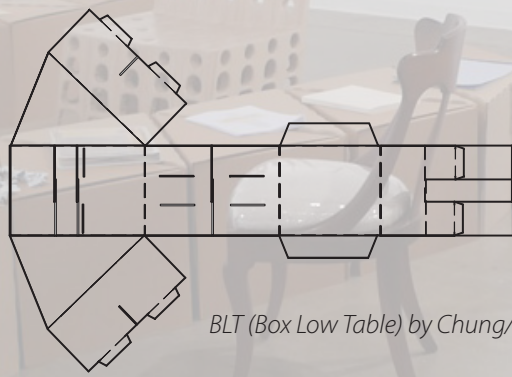
MAY 20 - JUNE 15, 2010
6518 HOLLYWOOD BLVD.
LA FORUM EVENTS@
WOODBURY HOLLYWOOD
EXHIBITIONS

CO-CURATED BY
KARIN LANZONI &
RACHELLE W. CHUANG
READING AREA BY
LINDA CHUNG &
DAN HERMAN

LIST OF WORKS

THE PAGE

AN INTERACTIVE EXHIBITION
OF ARTISTS' BOOKS



BLT (Box Low Table) by Chung/Herman



TABLES

LINDA CHUNG & DAN HERMAN

BLT (Box Low Table)

Each table module began as a 4x8 sheet of double-wall cardboard. Each sheet was hand-cut and scored from a template, like a standard cardboard box. However, unlike a standard box, these modules use no tape or glue. They accrue structural integrity from folds, flaps and slots. Delivered to the gallery flat--like an IKEA flat-pack--the modules have been folded and aggregated *in situ* to suit the needs of the books.

Linda Chung and Dan Herman (Chung/Herman) are architects based in LA. Linda is a lecturer at Woodbury University. Dan is a Senior Associate at AECOM.

CHAIRS

1 RENEE DAKE WILSON & BRIAN WILSON

The Dialog

The Dialog explores the relationship between wood as a material for construction and as a metaphor for the act of storytelling. Based on a primitive form of seating, *The Dialog* is constructed as a cut section of a tree, revealing its ringed and layered construction. However, wood remains only a symbolic gesture, as the entire ringed log is made up of thin layers of wool felt, with varying colors and thickness forming the concentric circles of the trees rings. The wool felt, "the oldest form of fabric known to humankind" provides a soft, inviting yet precarious place to sit and engage with the exhibits books and fellow visitors.

Renee Dake Wilson and Brian Wilson are principals of Dake Wilson Architects in LA.

2 TIM DURFEE

Storyboard

Reclaimed pine, rubber, nylon. A chair provides a position of repose for the body, at knee-height. *Tim Durfee is an architect based in Los Angeles. Production help from Sarhad Ghevandian.*

3 PIERPAOLO GRANATA

Pages chair

Bent plywood with fixed and flexible connections in steel, rubber, and aluminum.

Pierpaolo Granata is an LA-based architect.

4 TOM MARBLE

My seat at the table, possibly.

This chair, from the dining room furniture set of my childhood home, was where much of my training for adult human interaction took place. The gap between what I then thought was normal and what I later discovered about it has been a subject of investigation for me in both buildings and stories for some time. To prepare this chair for the exhibition, my only intervention was to replace the existing seat fabric with clear vinyl, so as to cue the user in to a greater sense of what occurs underneath.

Tom Marble is an architect and writer based in LA, where he is principal of Marble Architecture.

5 CHRIS PUZIO

Chair study

No real plan here. This is one of those deals where you go in the workshop late at night, fire it up and see what happens.

is a San Diego-based artist, designer and educator with expertise in the field of fabrication and metalworking. He coordinates fabrication and shop-related curriculum at Woodbury School of Architecture in San Diego, and he is represented by Luis de Jesus / Seminal Projects in San Diego.

6 NATHAN SWIFT & GLORIA LEE

The 2x4x16 Chair is made with 2x4 wood studs, the fundamental structural component of stick-frame construction in North America.

The chair consists of eleven equally sized pieces that are 16" long, referencing the most common unit of measurement in stick framing, but it also simplifies the cutting and assembly of the chair for would be DIY-ers. The folded and laser-cut metal brackets allow the stud pieces to be assembled without any joinery, miters, notches, or glue. The design of *The 2x4x16 Chair* attempts to restore our sense of the value and beauty inherent in the material, even as it

questions the ubiquitous practice of 2x4 construction.

Gloria Lee and Nathan Swift are the co-founders of Swift Lee Office, an architecture studio based in Los Angeles.

7 WARREN TECHENTIN WITH NIMA PAYAN & MACHINE HISTORIES

Para Chair, Iteration 1.2

The concept behind this chair began naively enough with the birth of our twins: my wife wondered why there were no rocking chairs that move side-to-side - the preferred direction for rocking our twins - instead of front-to-back. Additionally inspired by upholstery, the chair is infiltrated by "ghosted" buttons which pass through it. Stacked plywood was used for the obvious reference to both striped upholstery and the stacked sheets of a book. Analogous to the fact that the shape of a book has nothing to do with the space of its interior content, the simple child-like form of this chair tells a more complex interior spatial narrative. The decision to use parametric design tools to fabricate it allows the chair in theory to be modified easily via simple parametric changes which will be studied in future iterations. In this first iteration, the chair was milled largely on a 3-axis milling machine. Future iterations will move to a 5-axis machine.

Warren Techentin is an architect in downtown LA and an adjunct associate professor at USC. Nima Payan is a graduate student at USC. Machine Histories is an advanced fabrication shop in downtown LA.

8 f.l.u.f.f.

Two chairs and a barber finding form from a random assortment of baby-blue pieces results in: [c]hairless, a functional detournement, an almost-readymade, and a literal turn-about.

[c]hairless:

1. is made from off-the-shelf parts, incorrectly re-assembled
2. works right-side-up, upside-down, sideways, stacked, or side-by-side
3. has a miniscule budget
4. functions on many scales
5. brings design within reach
6. embraces the dirty details

f.l.u.f.f. is an informal association of architects and designers located in LA and collaborating on various projects, large and small, real and imagined. Members include Ingalill Wahlroos-Ritter (co-principal of the design firm [WROAD] and Chair of the undergraduate architecture program at Woodbury University in Burbank), Andrea Dietz (Assistant Chair of the School of Architecture at Woodbury University) and Matthew Milton (Woodbury University student and barber).

9 CHRIS WARREN (WORD)

The Tanizaki Chair, constructed from a single sheet of 12mm thick laser-cut plywood, answers the modern call for material efficiency and technology. However, the common contemporary desires for thinness and gloss have been purposefully renounced and instead replaced with volume and subtlety. The chair is space, made of light and shadow. "Find beauty not only in the thing itself but in the pattern of the shadows, the light and dark which that thing provides." -Jun'ichirō Tanizaki, *In Praise of Shadows*.

Christopher Warren is an LA-based designer and the founder of WORD (Warren Office for Research and Design).

CHAIRS & TABLES